

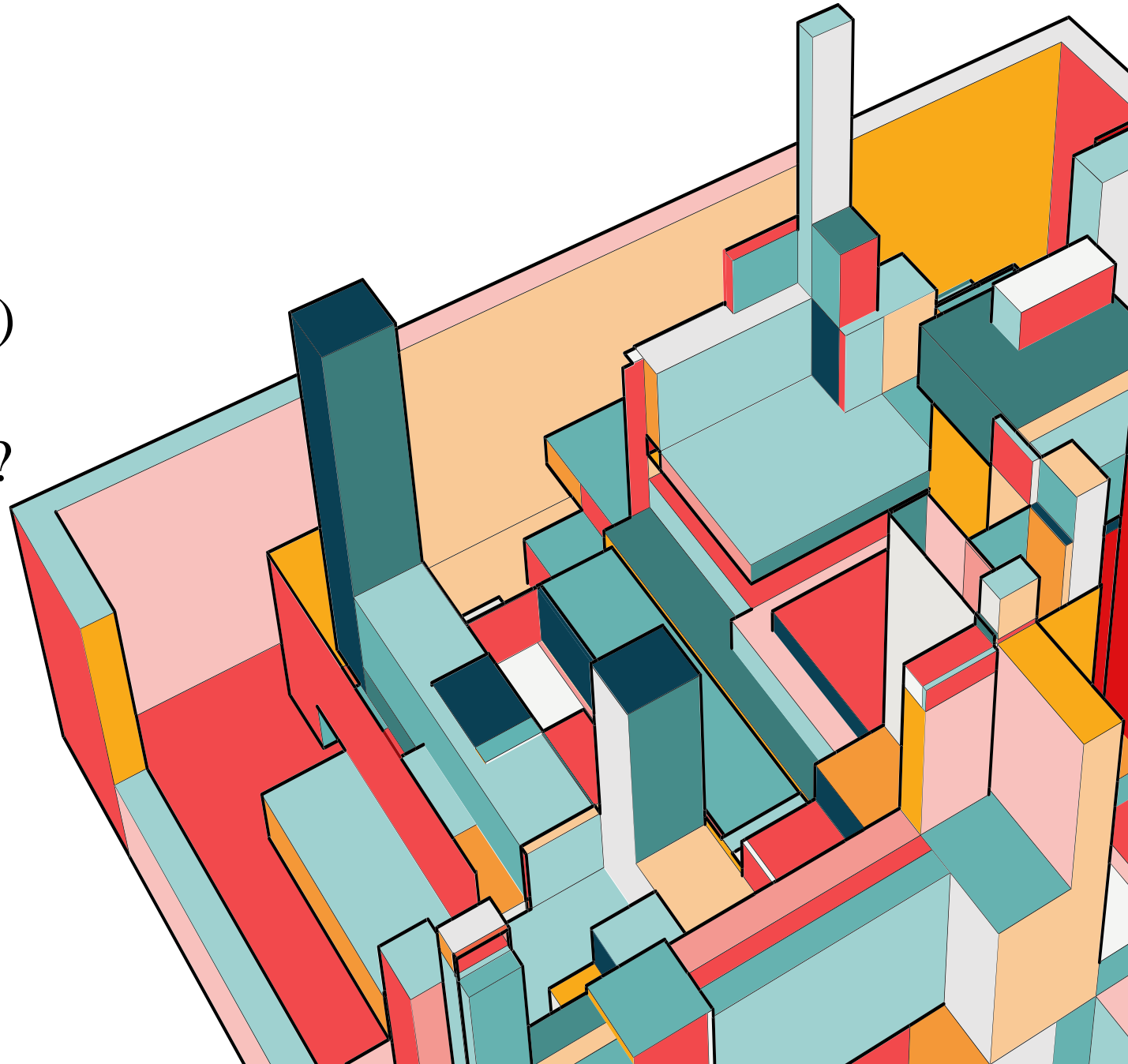


SPECIAL MEETING **THE STEEPLE**

Jan. 8, 2023

AGENDA

- Why are we meeting?
- Current problems (w/ pictures)
- Recent history of repairs
- Why steeple must be repaired?
- Where do we go from here?
- What are the options?
- Financing the repair
- Questions & Final thoughts



CURRENT PROBLEMS

STEEPLE CONDITION

- Deteriorated and **MUST** be repaired
- Paint flaking & metal corroding
- Holes in structure - active water leaks
- Ceiling in chancel – **WORSENERD!!**
- Organ at risk – **AGAIN!!**

STRUCTURE

- Roof, structure and interior are compromised
- Wood – Mildew and wood rot are accelerated

USABILITY

- If problems are not addressed:
NO CHURCH!!!



DETAILED PICTURES - EXTERIOR



Base of steeple
NO flashing, NO proper drainage
Open holes

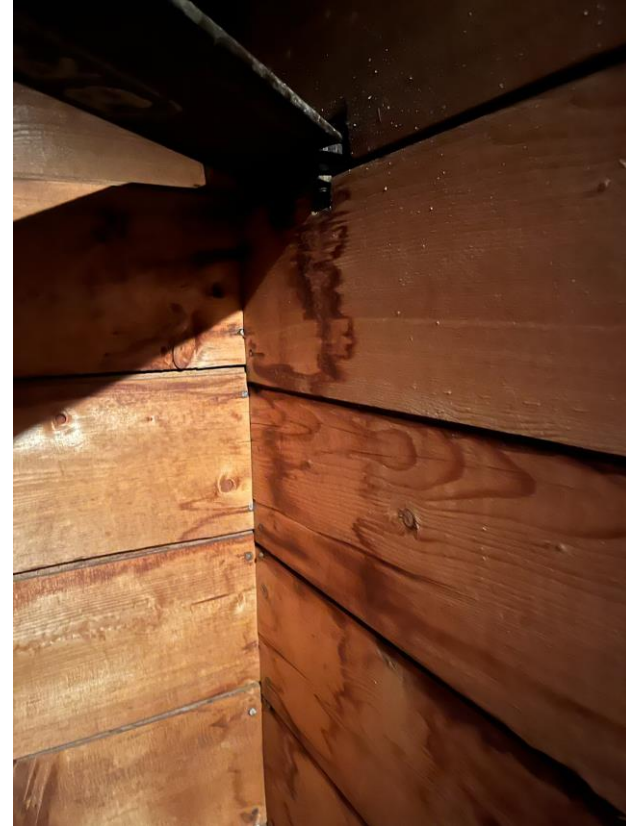
DETAILED PICTURES – EXTERIOR (CONT.)



Spire

Paint chipping & Heavy metal corrosion

DETAILED PICTURES – INTERIOR

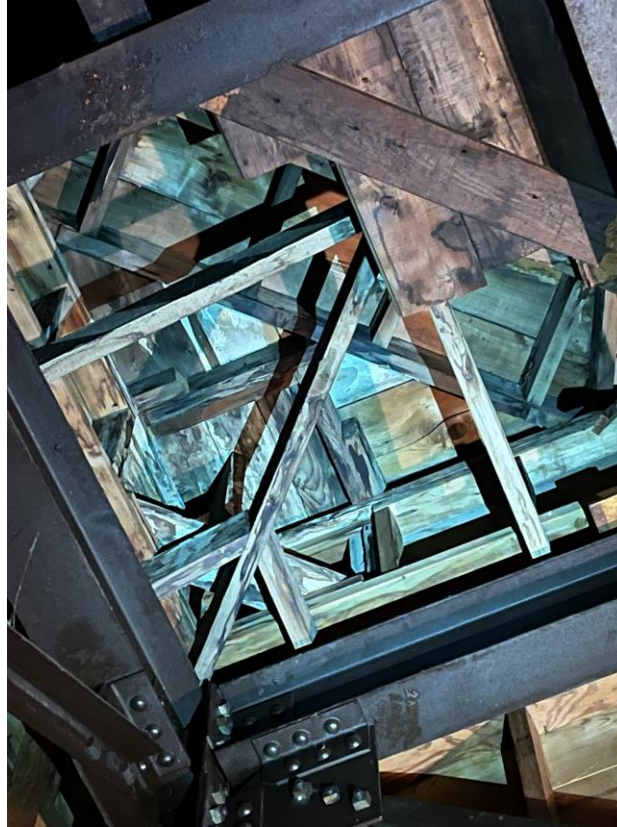


Foundation of steeple in attic (above chancel)

Extensive water damage

Mildew

DETAILED PICTURES – INTERIOR



Foundation of steeple in attic above I-beams

Extensive water damage

Numerous holes on exterior seam

“RECENT” REPAIR HISTORY

Nov. 2022 – Flower Rm Ceiling

- Insulation pushed back up into ceiling joists
- Ceiling reinforced with lumber

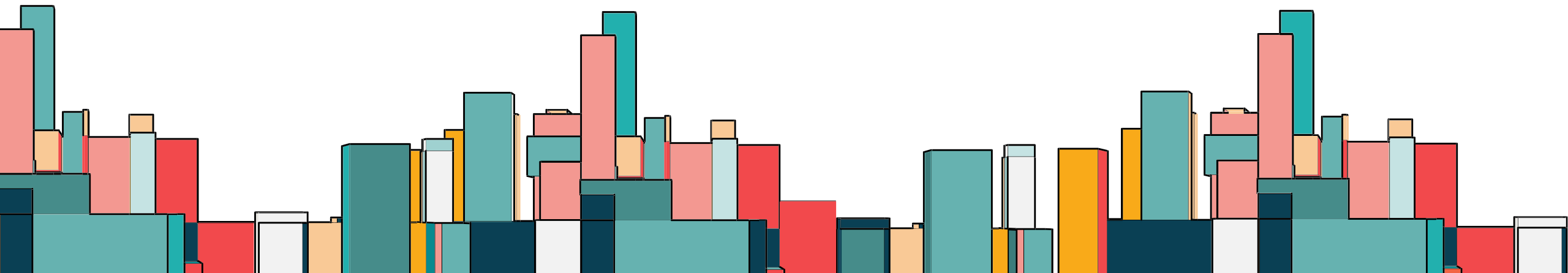
Jan. 2020 – Solar Panels

- New roof above sanctuary on north side **ONLY**
- Put on for solar panels

March 2002

- Ceiling in chancel scraped and painted

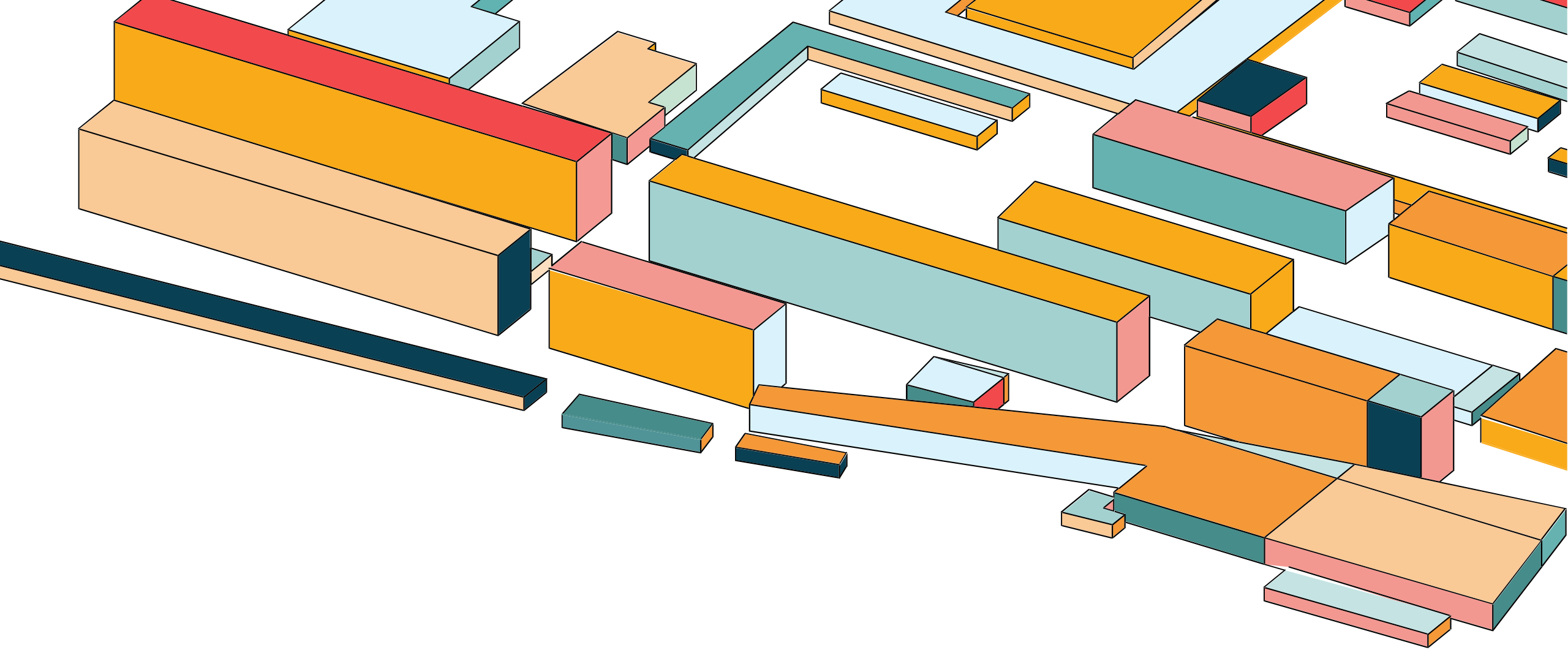
And that's it.....



WHY REPAIR?

- Continued damage to structures
- Damage to chancel ceiling
- Damage to church contents (i.e., organs, pipes, pews, Bobbie)
- Choir & Bobbie will not like using umbrellas or hardhats during service





WHERE DO WE GO FROM HERE...?

POTENTIAL OPTIONS



Full
restoration



Fix exterior
issues



Do nothing

POTENTIAL OPTIONS

Full Renovation

(Painter's Pride)



\$250-400K

- Complete overhaul
- Preserved
- Need repainting every 2-3 years (\$75K)

Fix Exterior

(Kelley Blg Group)



\$40-55K

- Seal up steeple
- Fix & prevent future leaks
- Fix chancel ceiling

Do Nothing

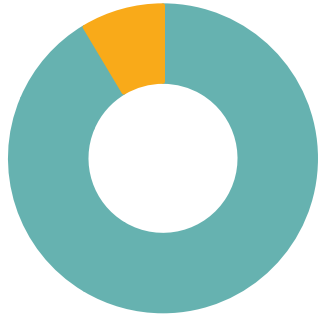
(Leave it to Faith, Inc.)



\$???

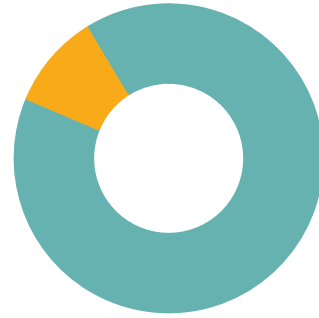
- Problems accelerate
- Ceiling or steeple crumbles and falls
- Church would close until repaired

FUNDING THE PROJECT



Member
Contributions

Revenue
obtained
directly from
members
donating



Grants

Obtained
through grants
(fed/state).
Need to do
extensive
research to
find.



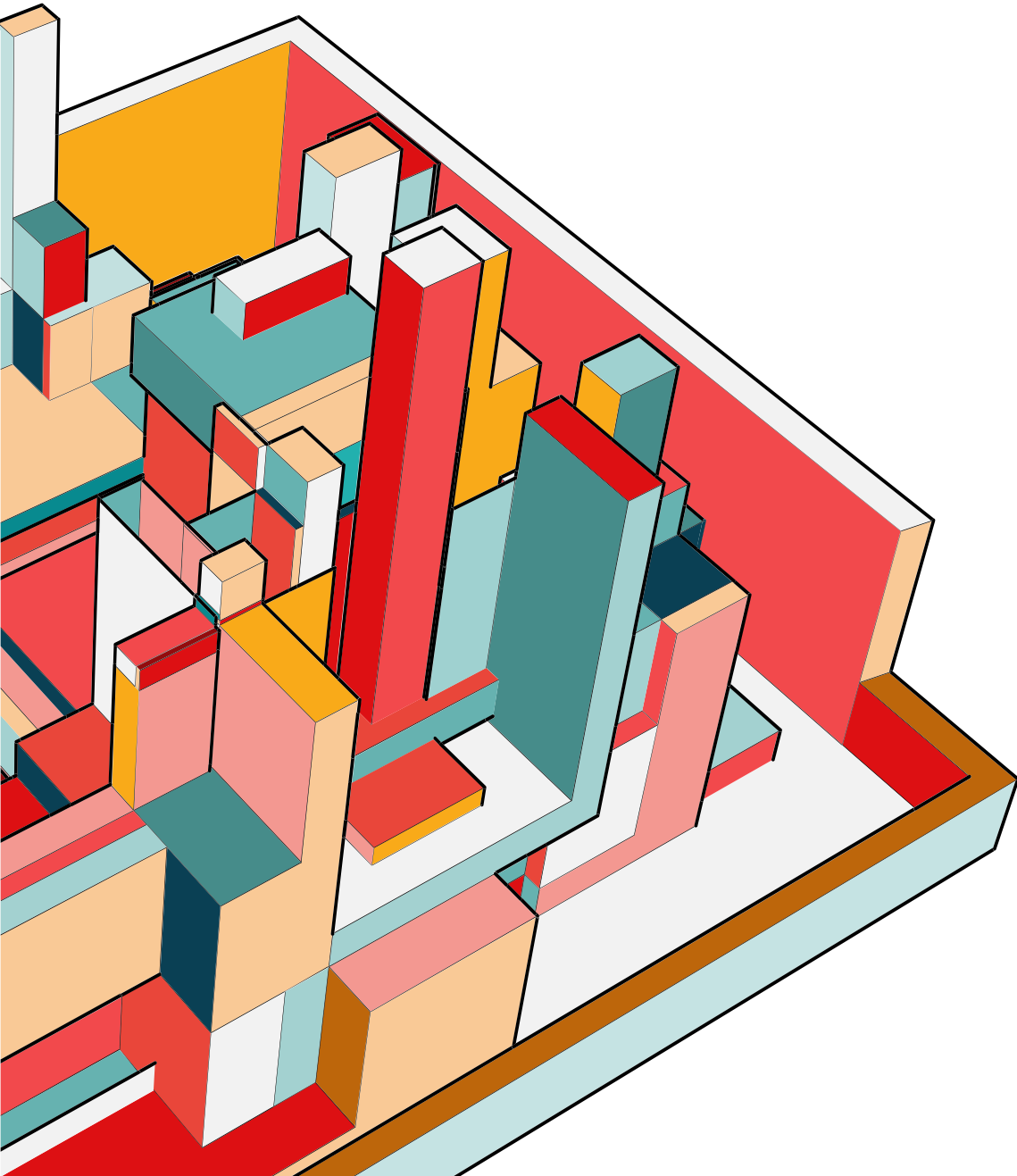
Endowment

Cash we have
in our depleted
funds



Capital Campaign

Amount
obtained
through
investors &
donors



SUMMARY & Q&A

We are at a crossroad...

In order to continue to gather as a congregation in our church, we **must** act on doing the necessary repairs on the steeple.

Without action and our combined financial efforts to make this project a reality, our church may close indefinitely should the building start to crumble.

THANK YOU

Phys Ops Commission

Rick Averill

Chris Ryan

Steven Mattocks

Larry Harris

